

EDIFICIO
vistaGaiás

VIVIENDA 1º A

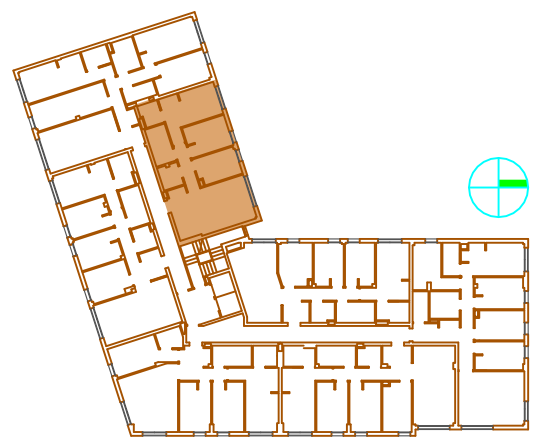
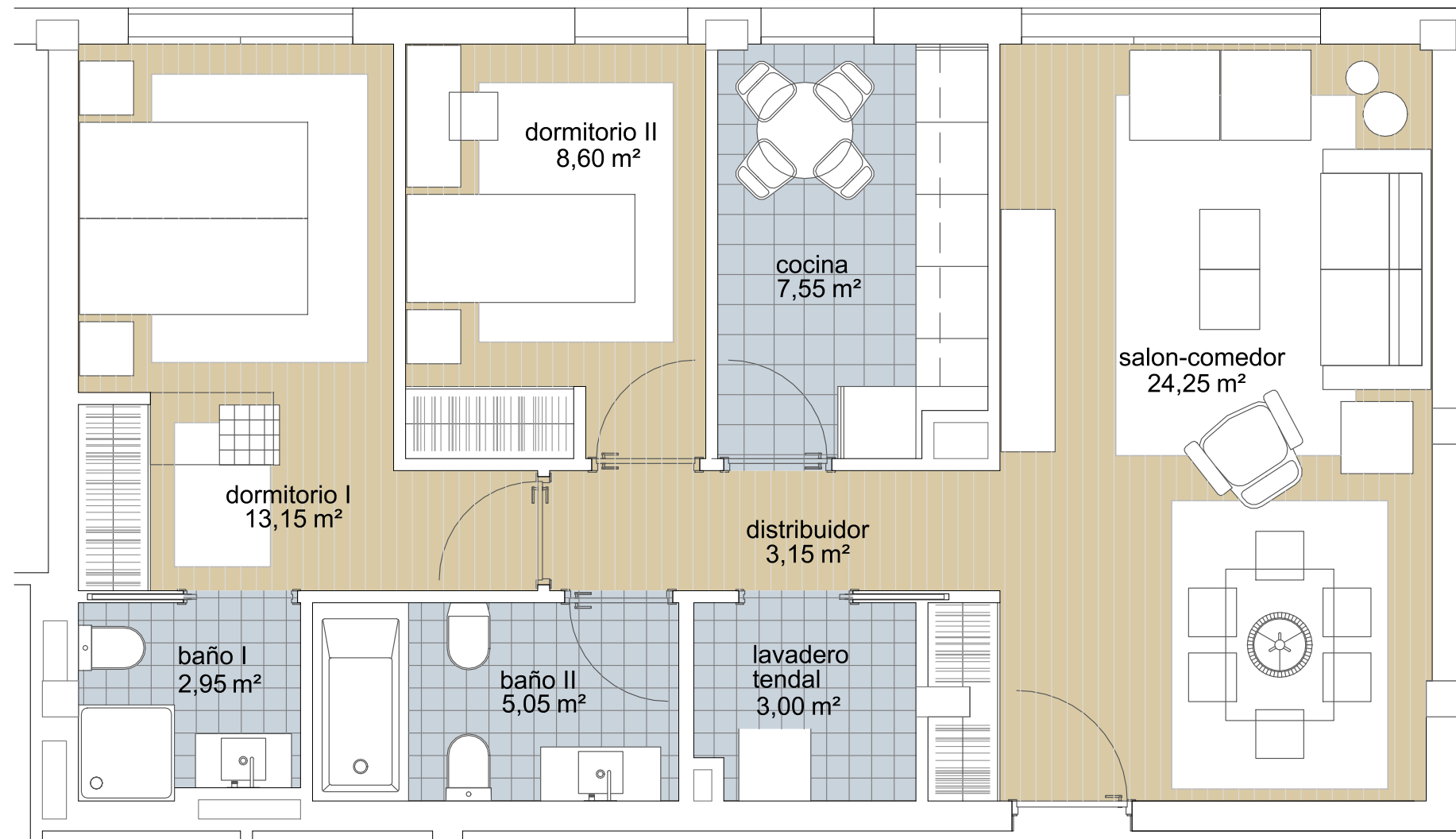
2D

m²

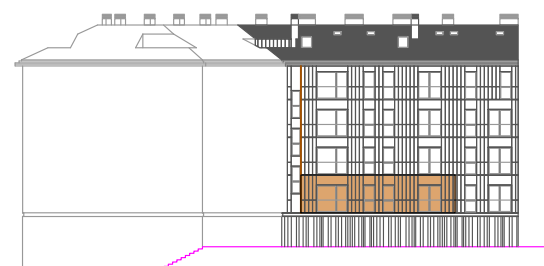
Sup. util cocina	7,55 m ²
Sup. util salon-comedor	24,25 m ²
Sup. util lavadero-tendal	3,00 m ²
Sup. util distribuidor	3,15 m ²
Sup. util baño I	2,95 m ²
Sup. util baño II	5,05 m ²
Sup. util dormitorio I	13,15 m ²
Sup. util dormitorio II	8,60 m ²

TOTAL SUP. ÚTIL CERRADA 67,25 m²

SUP. CONSTRUIDA 78,59 m²



planta 1ª



alzado L-3

escala gráfica



Viqueira