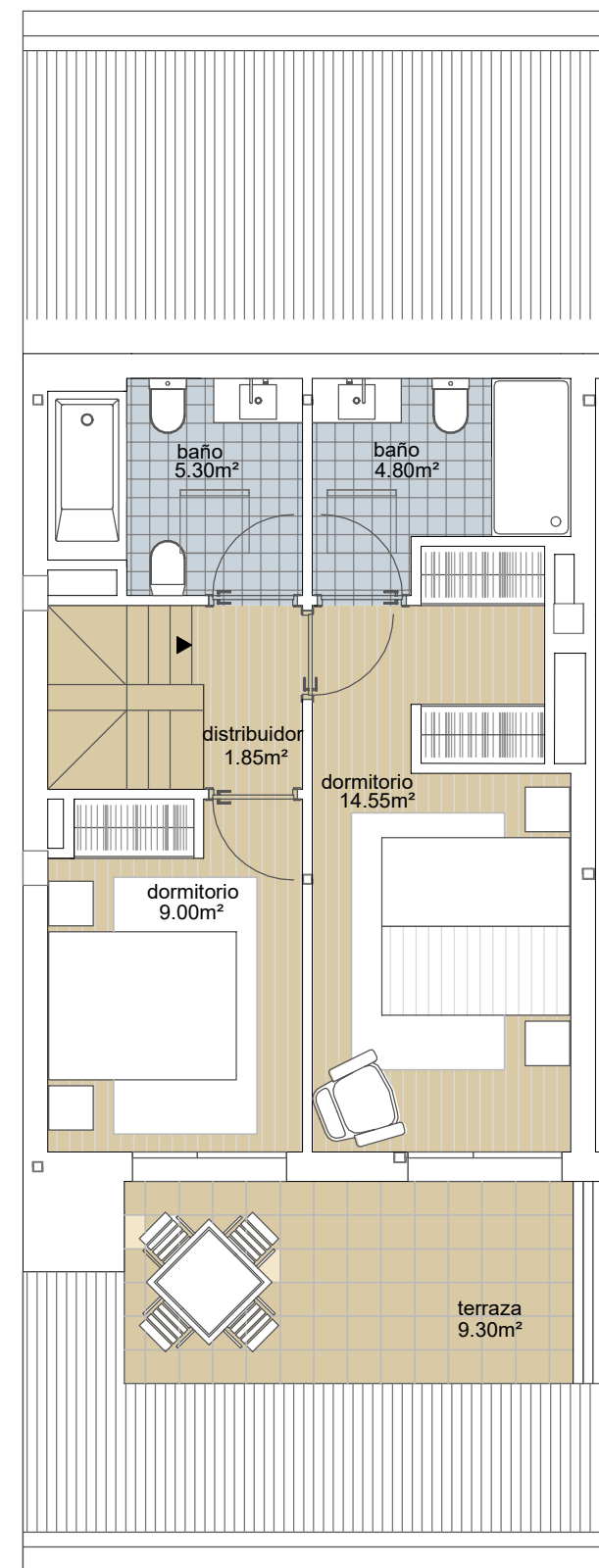
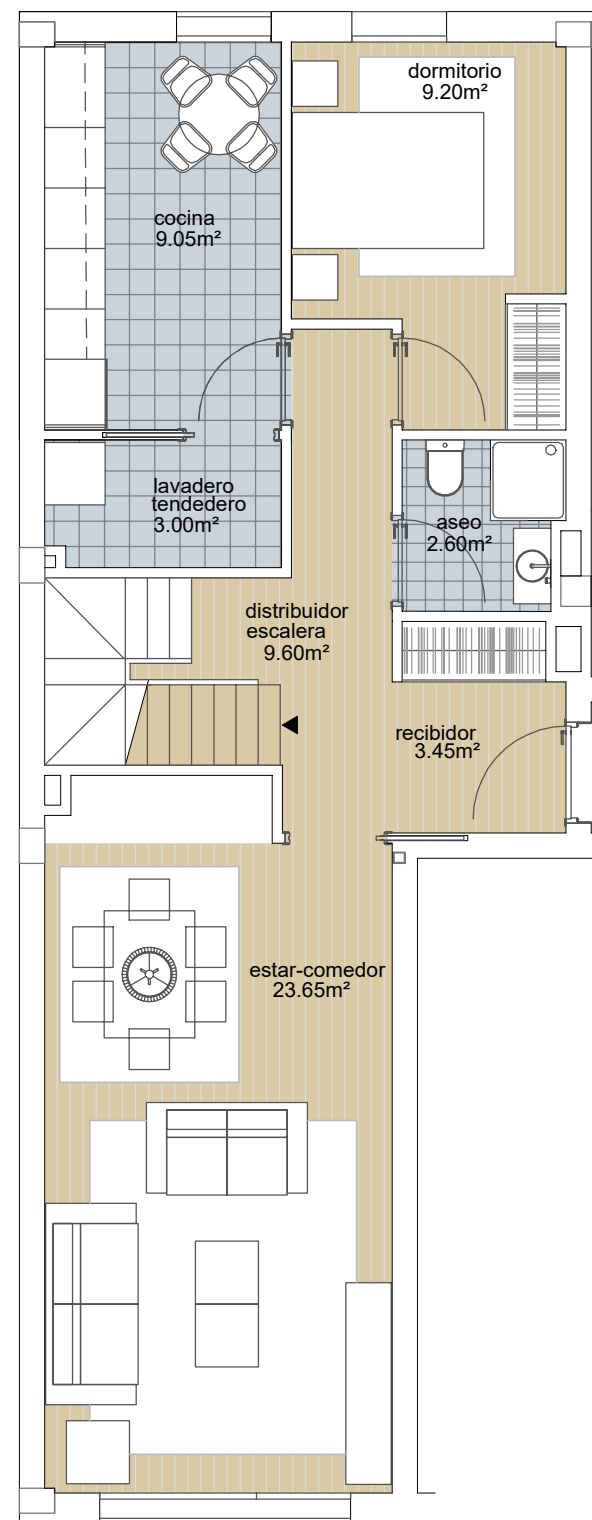
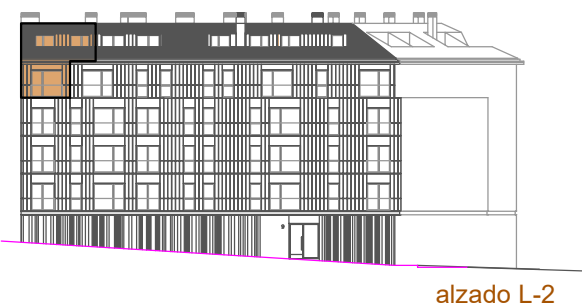
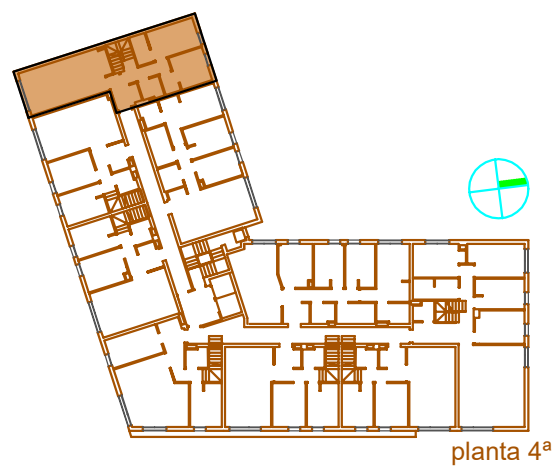


EDIFICIO
vistaGaiás

VIVIENDA 4º B - DUPLEX 3D

	m²
Sup. util recibidor	3,45 m ²
Sup. util aseo	2,60 m ²
Sup. util cocina	9,05 m ²
Sup. util salon-comedor	23,65 m ²
Sup. util lavadero-tendal	3,00 m ²
Sup. util distribuidor-esc.	11,45 m ²
Sup. util baño I	4,80 m ²
Sup. util baño II	5,30 m ²
Sup. util dormitorio I	14,55 m ²
Sup. util dormitorio II	9,00 m ²
Sup. util dormitorio III	9,20 m ²
TOTAL SUP. ÚTIL CERRADA	96,05 m²
TOTAL SUP. ÚTIL TERRAZAS	9,30 m²
SUP. CONSTRUIDA	122,69 m²



escala gráfica



Viqueira