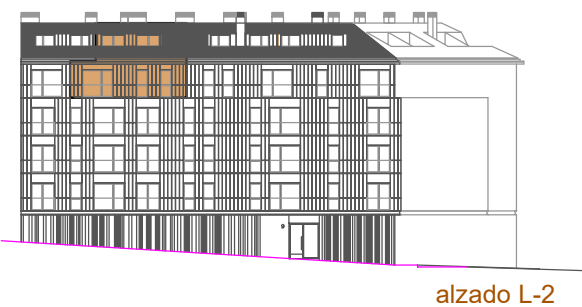
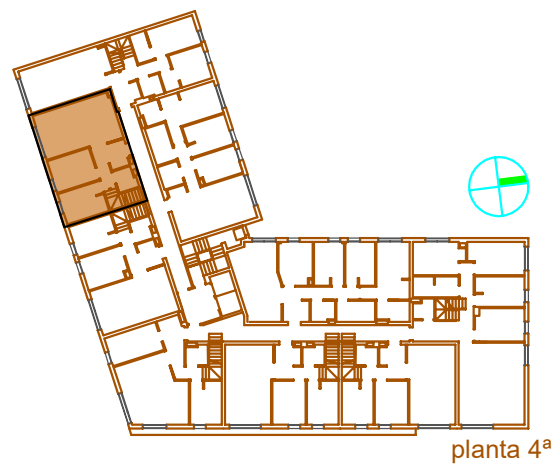
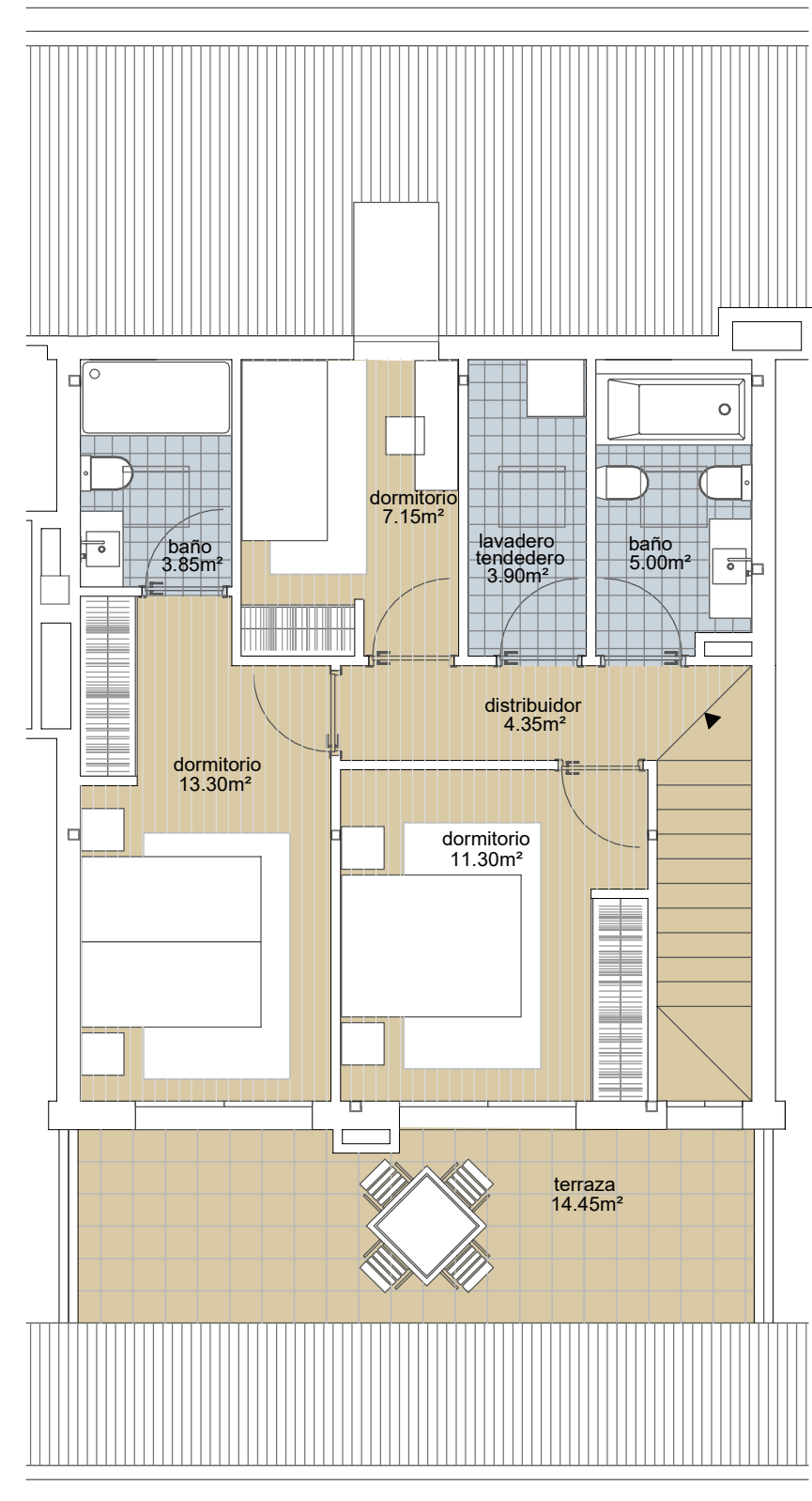
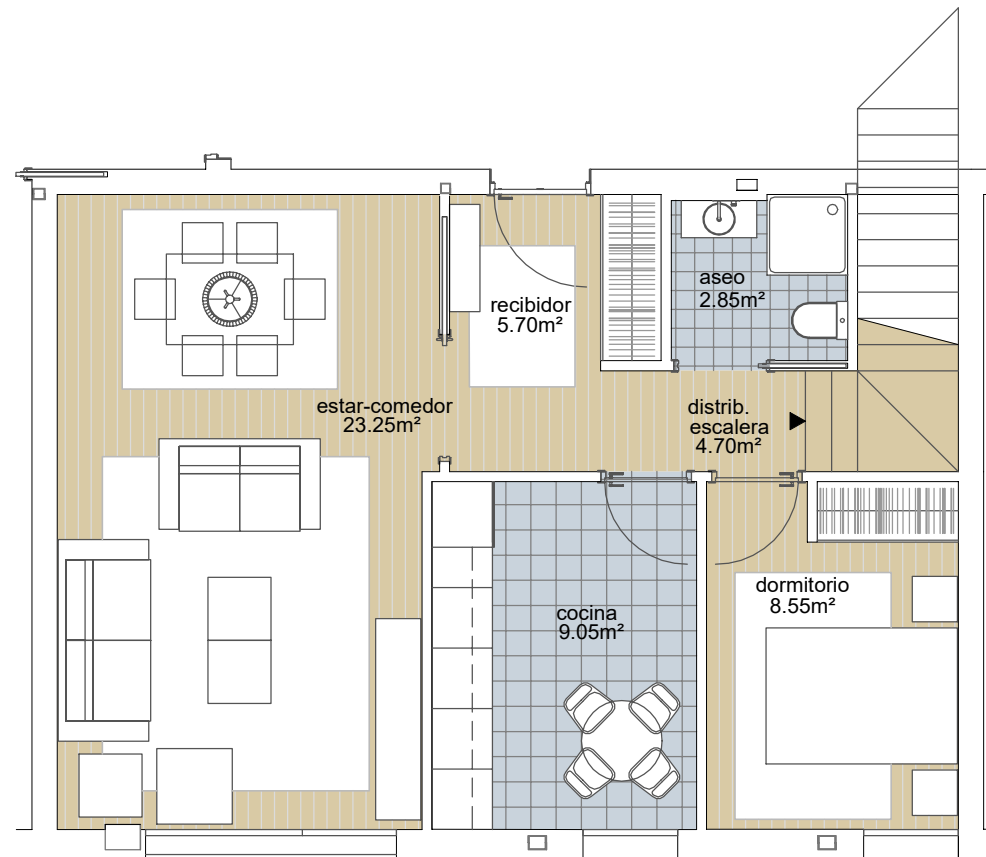


EDIFICIO
vistaGaiás

VIVIENDA 4º C - DUPLEX 4D

	m²
Sup. util recibidor	5,70 m ²
Sup. util aseo	2,85 m ²
Sup. util cocina	9,05 m ²
Sup. util salon-comedor	23,25 m ²
Sup. util lavadero-tendal	3,90 m ²
Sup. util distribuidor-esc.	9,05 m ²
Sup. util baño I	3,85 m ²
Sup. util baño II	5,00 m ²
Sup. util dormitorio I	13,30 m ²
Sup. util dormitorio II	11,30 m ²
Sup. util dormitorio III	7,15 m ²
Sup. util dormitorio IV	8,55 m ²
TOTAL SUP. ÚTIL CERRADA	102,95 m²
TOTAL SUP. ÚTIL TERRAZAS	14,45 m²
SUP. CONSTRUIDA	132,33 m²



escala gráfica



Viqueira